



TIP OF  
THE  
MONTH



## ANALYSIS REPORTS - PRINTING IN DILUTION

### Printing Reports in Dilution

Analysis reports are often used for internal reporting to investigate complex information about Items. They can now be used to print for dilutions of Items, similar to 'Print a Document for an Item'.

You can associate an application, e.g. candle with a base Item (e.g. an item which represents the base e.g. candle wax). Then, when you use For Dilution the associated base item will be used as the diluent. This is particularly useful when the base should influence the regulatory calculations.

To associate an item with an application:

- Go to 'Add a New Application'
- Enter Code e.g. "SOAP"
- Enter Name e.g. "Skincare Soap Bar"
- Select Base Item e.g. "Dipropylene glycol"
- Add in any extra information you want to reflect
- Click Save

You will now be able to select this application and use this item by default within 'Print Documents for an Item' and 'Print Item Analysis Reports.'

### Navigate to 'Print Item Analysis Report'

Input the Item you want to print the report for and select the Report Type from the drop-down list.

You have the option to include a Company, Property, Application, Dosage, Dilution percentage, Cross Reference, and Language (which is set to Default). Select the Format of report required from the drop-down list and Print.

'CLP Hazard Contribution by Component Report' shows Components of an Item which contribute to the CLP Hazards of that Item, looking at each Component in turn. This report can now be generated in dilution which can make identifying the contribution of the hazard in end product much easier.

Page 1 ( 3 )

### CLP Hazard Contribution by Component Report

**Item Code** TEST12783  
**Item Name** Lavender, Cedarwood and Orange Oil (10% in DTH Test Formulation - Water)

Component Name	Component Code	Concentration(%)		Item Specific Concentration	TFV
Property Code	1 Source Property Code	2 Lower Limit(%)	3 General Concentration Limit(%)	4 Limit(%) / Value	5
Galaxolide neat	FPD-2011A-1045		1		
CLPSDSINGDETAILS	CLPSDSINGDETAILS	-	-	-	-
SCI 2=	SCI 2, H315	1	10	-	0.1
EH A1=	EH A1, H400	0.1	25	-	0.04
EH C1=	EH C1, H410	0.1	25	-	0.04
EH C2=	EH C1, H410	0.1	2.5	-	0.4
EH C3=	EH C1, H410	0.1	0.25	-	4
EH C4=	EH C1, H410	0.1	25	-	0.04
Dipropylene glycol monomethyl ether	FPD-2011A-1947		1.5		
CLPSDSINGDETAILS	CLPSDSINGDETAILS	-	-	-	-
CLPOELINGDETAILS	CLPOELINGDETAILS	-	-	-	-
ECOELINGDETAILS	ECHASOEL	-	0	-	-
SCI 2=	SCI 2, H315	1	10	-	0.15
TESTOEL	TESTOEL	-	-	-	-

1. Source Property Code displays the source of the focus Property.
  2. Lower Limit % at which the Property is considered relevant in the calculations.
  3. General Concentration Limit % at which the Property is triggered for a mixture.
  4. Item specific limit is displayed if the Item has a specific limit, for example, Acute Toxicity values.
  5. TFV the Total Fractional Value is the concentration of a hazardous ingredient divided by the generic concentration limit of that hazard for the ingredient(s).
- TFV = 1 or more - the hazard applies the same way to express the hazard regardless of the trigger limit. Printing the report in dilution will affect the concentration amount but the trigger limit will remain the same.

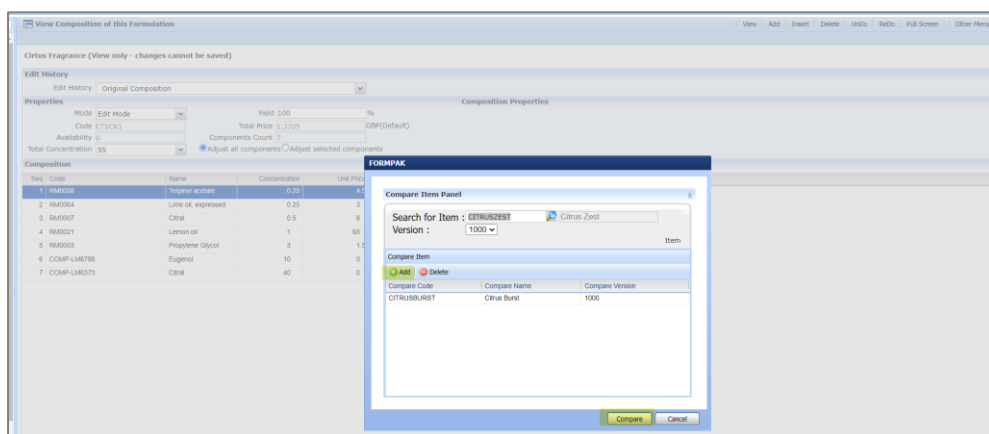
## Mini Tip

### Compare Compositions of Items

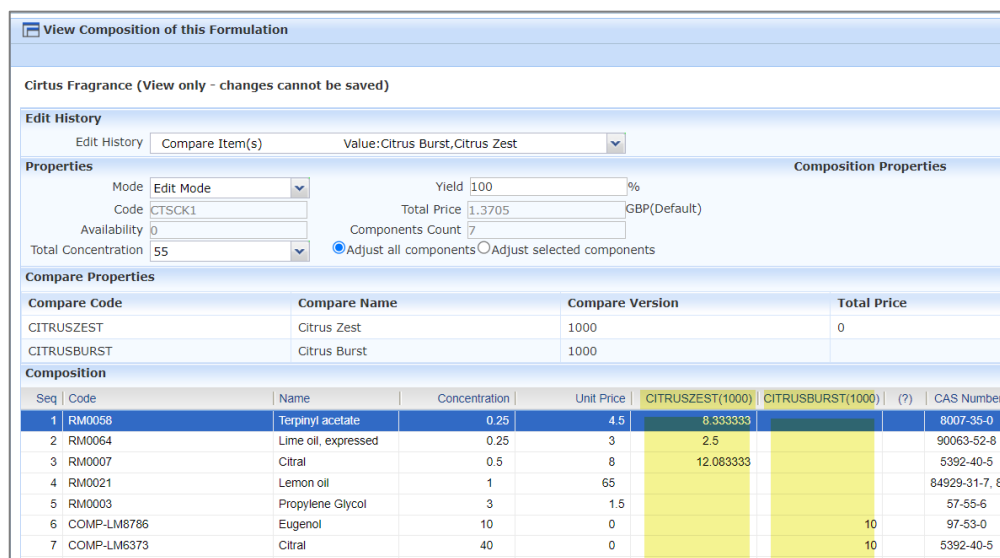
#### Composition Comparison

In 'View and Modify a Formulation's Composition' you can compare Compositions of Items and print the results.

Select Other Menus, select Compare, Input the Item and select the plus to add the Item to the Compare function, and click the Compare button.



The Items will be displayed in the CDT which then may be printed to PDF/Excel using Print from the Other Menu option.



Compare Code	Compare Name	Compare Version	Total Price
CITRUSZEST	Citrus Zest	1000	0
CITRUSBURST	Citrus Burst	1000	0

Seq	Code	Name	Concentration	Unit Price	CITRUSZEST(1000)	CITRUSBURST(1000)	(?)	CAS Number
1	RM0058	Terpinyl acetate	0.25	4.5	8.333333			8007-35-0
2	RM0064	Lime oil, expressed	0.25	3	2.5			90063-52-6
3	RM0007	Citral	0.5	8	12.083333			5392-40-5
4	RM0021	Lemon oil	1	65				84929-31-7, 80
5	RM0003	Propylene Glycol	3	1.5				57-55-6
6	COMP-LM8786	Eugenol	10	0		10		97-53-0
7	COMP-LM6373	Citral	40	0		10		5392-40-5

To see previous 'Tip of the Month' articles, please see [here](#).

All of our training and support material can be accessed from our **Support Centre**. The Support Centre is available 24/7 and is a great resource to use at your convenience. It includes:

- Over one hundred training and support articles
- Links to training videos
- Quick Start Guides
- The Formpak Training Matrix

The Support Centre can be accessed on the Home screen of Formpak software or via the following link: [https://www.formpak-software.com/Support\\_Centre/Pages/Support\\_Centre.html](https://www.formpak-software.com/Support_Centre/Pages/Support_Centre.html)

Our **Support Team** are available:  
Monday - Thursday: 8:30 - 17:00 (GMT)  
Friday: 8:30 - 16:00 (GMT)  
Email: [support@formpak-software.com](mailto:support@formpak-software.com)  
Telephone: +44 (0) 1235 250 020

The Formpak **Help Centre** is included directly in Formpak software, just press the 'Help' button to access it. The Formpak Help Centre offers explanations for each function of the application as well as a glossary of the technical terminology used.

View our **YouTube** channel with lots of helpful guides and information about Formpak  
<https://www.youtube.com/user/FormpakSoftware/videos>